



ATLAS
TOWER GROUP

June 2026

GL52-01 Gotherington

Atlas Tower Group Limited

Document Classification: Public

Introduction

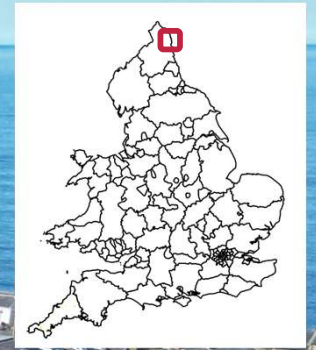
About Atlas Tower Group

- Atlas Tower Group Limited (Atlas) was established in June 2018, to provide telecommunications infrastructure to the Mobile Network Operators on a national basis
- Over the past 9 months we have been investigating mobile coverage in Gloucestershire and have identified around Sixteen locations where we believe mobile coverage is particularly poor
- We are now meeting with the community leaders in groups like this one to discuss the options for improving the coverage issues
- No financial contribution required for the development of the site. Atlas have contracts in place with all of the mobile operators who pay an annual rental for having their equipment on our site
- This proposal is entirely voluntary, Atlas only want to work in locations where the local community are engaged and supportive of what we are trying to do. So far, the response has been extremely positive

One of our sites in Wolverhampton



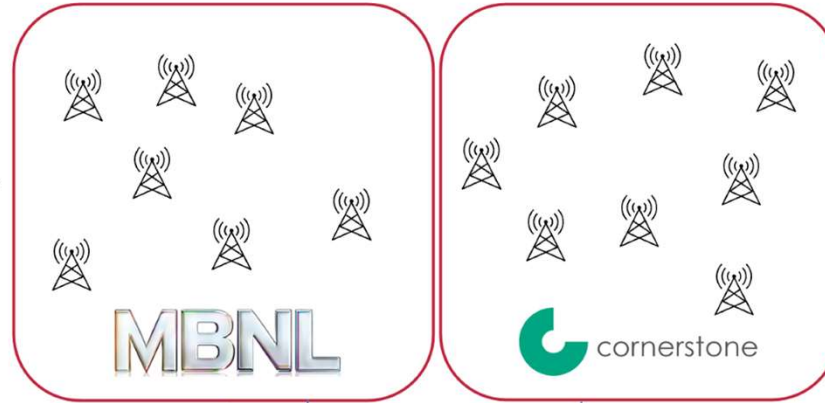
New tower



UK Infrastructure



Only two physical networks although there are some unilateral deployments



Network Operators

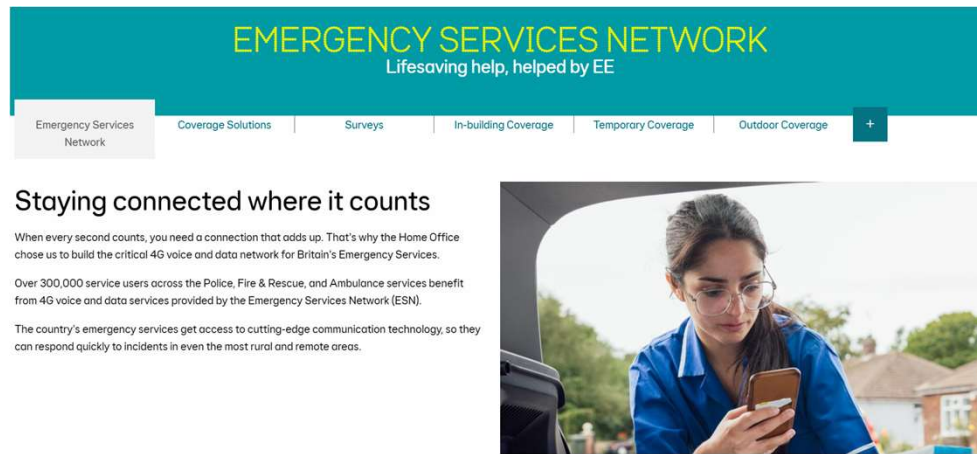


Wholesale Reseller (MVNO) Mobile Virtual Network Operators do not own any sites

Why do I need mobile phone coverage?

Emergency Services Network (ESN EE)

<https://www.gov.uk/government/publications/the-emergency-services-mobile-communications-programme/emergency-services-network>



EMERGENCY SERVICES NETWORK
Lifesaving help, helped by EE


Emergency Services Network | Coverage Solutions | Surveys | In-building Coverage | Temporary Coverage | Outdoor Coverage

Staying connected where it counts

When every second counts, you need a connection that adds up. That's why the Home Office chose us to build the critical 4G voice and data network for Britain's Emergency Services.

Over 300,000 service users across the Police, Fire & Rescue, and Ambulance services benefit from 4G voice and data services provided by the Emergency Services Network (ESN).

The country's emergency services get access to cutting-edge communication technology, so they can respond quickly to incidents in even the most rural and remote areas.



Helping heroes get to work

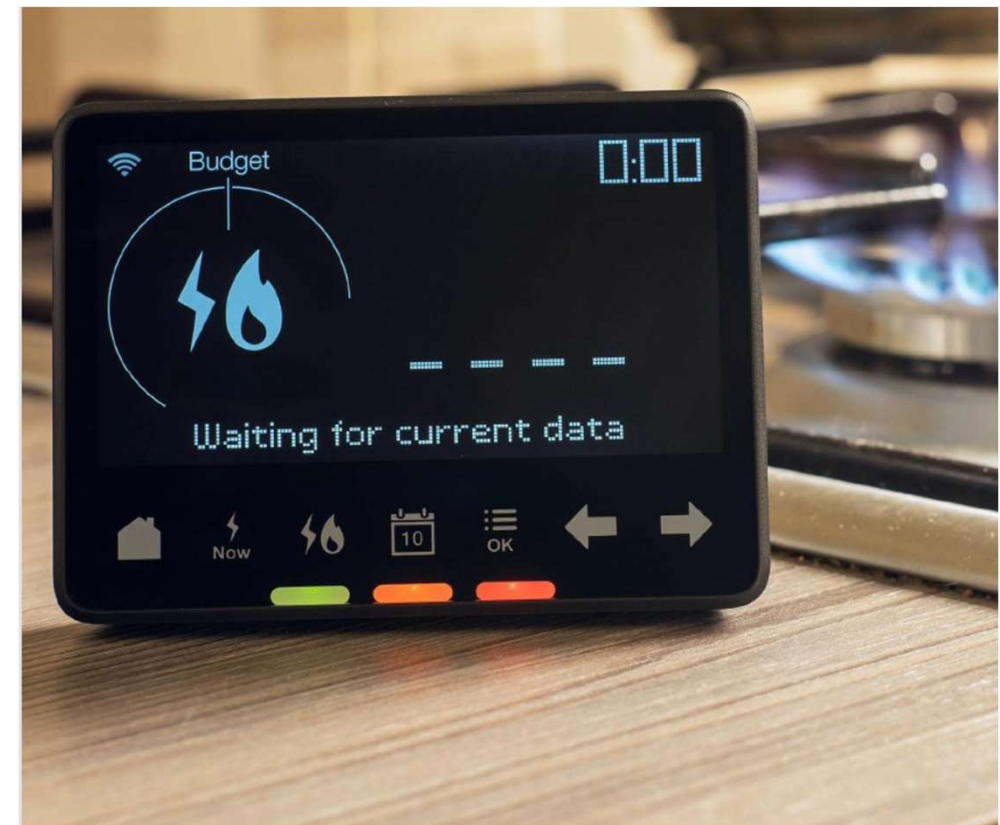
Through use of the EE network, the ESN can provide resilient and secure mission-critical communications to Britain's emergency services.

Our network helps:

- ambulances sending vital patient data to hospitals so staff can prepare for a patient's arrival
- police officers recording an arrest on body cams and live streaming for assessment and support
- fire and rescue crews assessing burning buildings based on digital blueprints on tablets and live helicopter camera footage

Smart Metering (VMO2 & Vodafone)

<https://www.smartdcc.co.uk/our-smart-network/does-a-smart-meter-need-wi-fi/>



<https://www.renewableenergyhub.co.uk/blog/why-smart-meters-are-important-for-the-net-zero-target>

Medical Applications

Connected wearables are transforming the management of type 1 diabetes



<https://news.virginmediao2.co.uk/supporting-children-with-diabetes/>

Remote monitoring requires mobile connectivity

- These devices are a ‘game-changer’ for families across the UK
- Children no longer need to be pricked multiple times a day to check their glucose levels as the results go straight to a smartphone
- Parents can log in remotely and monitor the condition so that children and their parents can lead normal active lives.

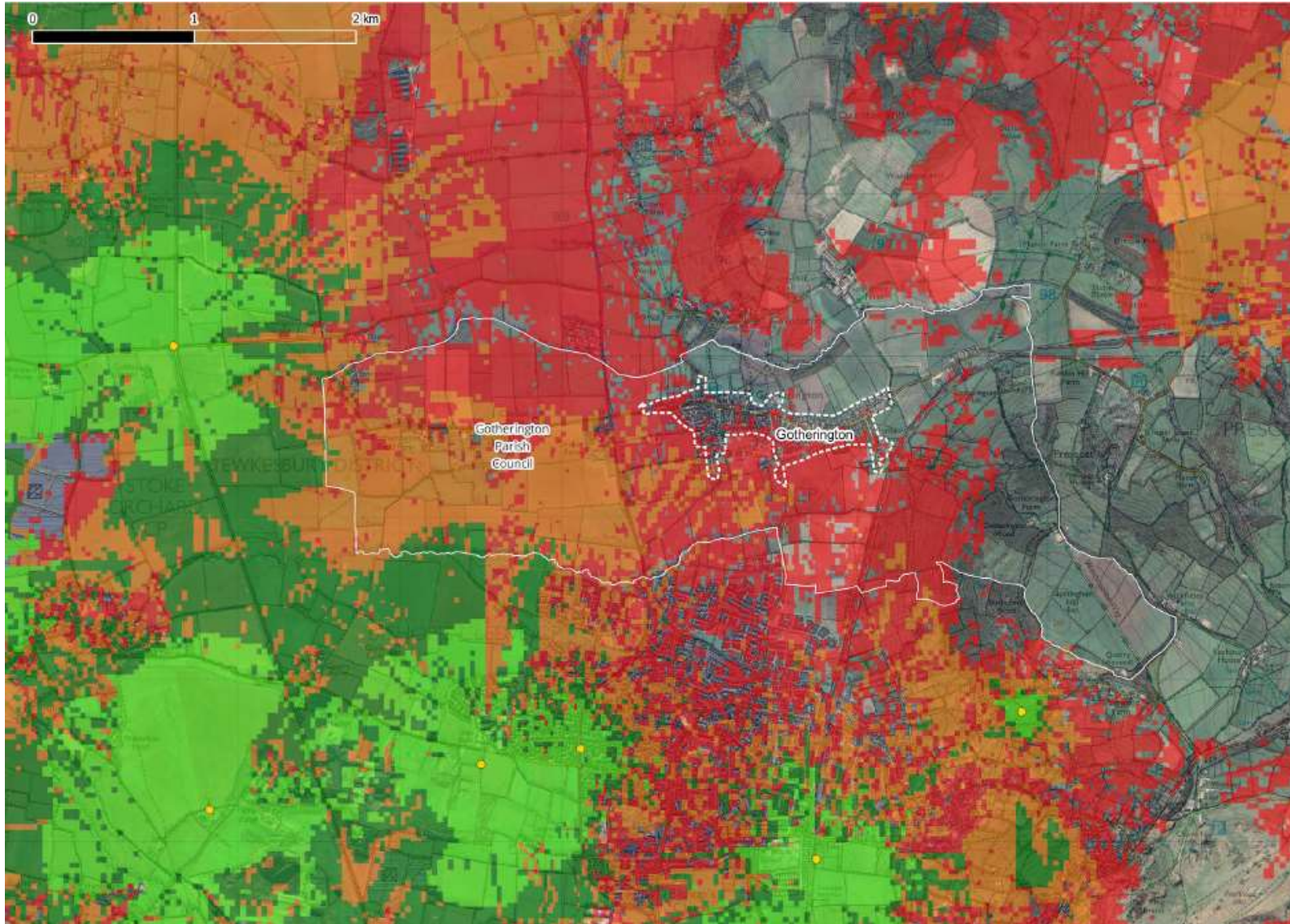
<https://news.virginmediao2.co.uk/supporting-children-with-diabetes/>

VMO2 are working to ensure the technology is available to all

- Virgin Media O2 has provided 1,000 refurbished smartphones via Community Calling to charity, Supporting Children with Diabetes, and pledged a further 500 devices to help low-income families manage Type 1 diabetes
- The devices are helping families across the UK to check their children’s blood glucose levels in real-time, which can help keep the condition under control
- It’s part of Virgin Media O2’s commitment to provide 12,000 devices and data to people who need them throughout 2025

<https://news.virginmediao2.co.uk/supporting-children-with-diabetes/>

GL52-01 Gotherington : Existing Coverage



Existing predicted coverage
From near by sites(sites are indicated by the yellow dots within the center of the bright green areas).

This shows that existing sites are unable to provide high quality coverage to Gotherington as they are over 2.5km away or affected by terrain.

To improve mobile phone coverage, a site much closer to the community in Gotherington is needed.



Gotherington: Streetwave drive data

EE



Three



O2



Vodafone



Gloucestershire County Council work with Streetwave to collect drive test data across the county. The results of their independent survey show that coverage in Gotherington is poor.

A new site would improve this considerably, providing high quality mobile coverage and broadband.

Streetwave's data can also be found on their website: <https://app.streetwave.co/coverage-checker/60/map>



GL52-01 Gotherington : Terrain



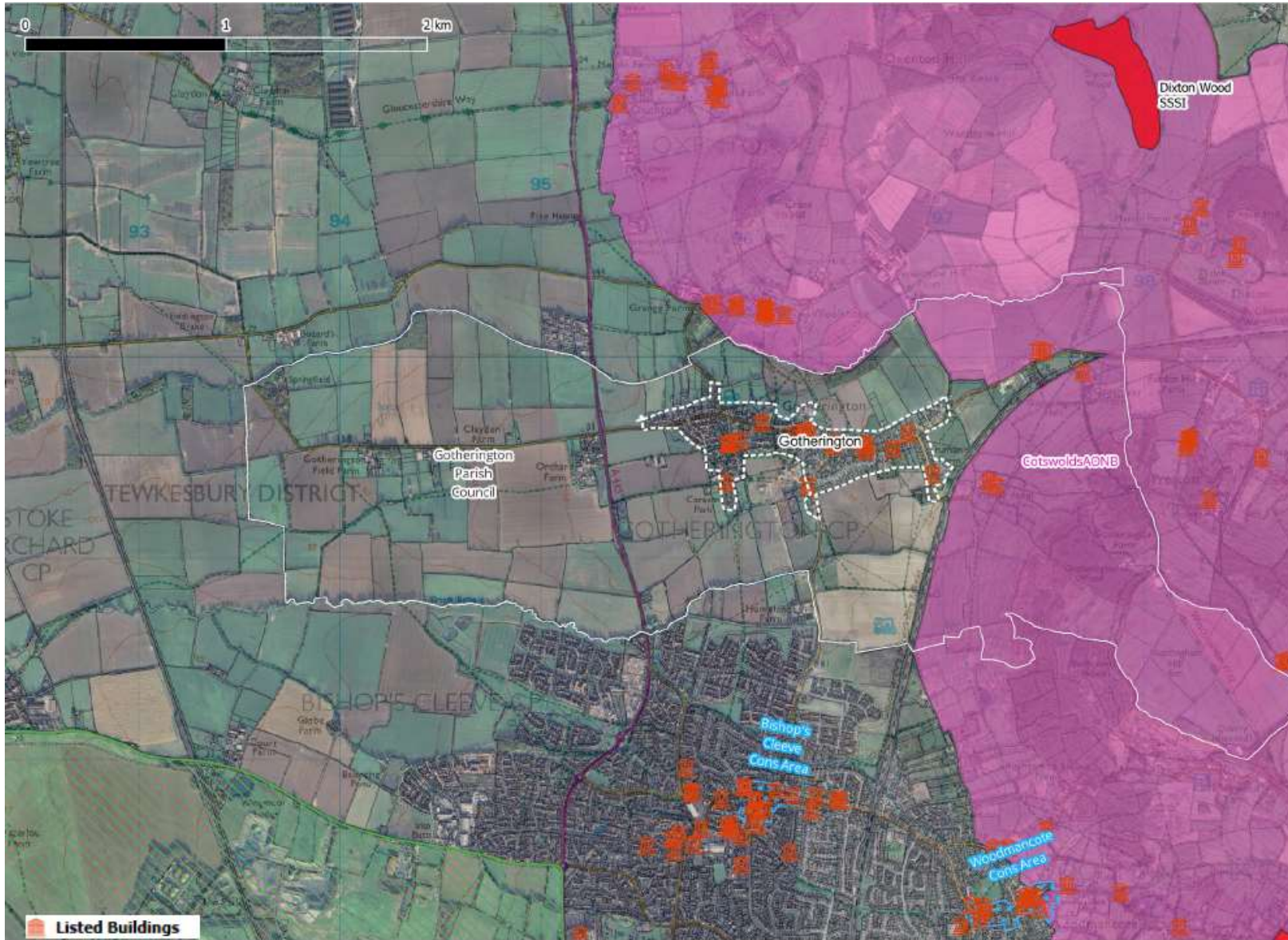
The village of Gotherington is situated in an area with varied terrain.

Located on the edge of the Cotswolds escarpment, it ranges from low-lying valleys in the west to the steep slopes of the hills in the east.

The village itself lies on a slight ridge, with a distinct valley to the north.

In order to bring coverage to the village, a site would need to be situated on higher ground close to the village.

GL52-01 Gotherington : Considerations when choosing a potential location



Gotherington lies close to the Cotswolds AONB to the north and east of the village.

There are 17 Grade II listed buildings within the village including the Gotherington War Memorial.

A carefully selected location to minimise the visual impact from a new mast, whilst giving the required coverage, will be critical in Gotherington.

GL52-01 Gotherington : Options



Potential options based on coverage, power good access from a main road and outside of any designations

GL52-01 Gotherington : Predicted Coverage



ATLAS
TOWER GROUP

A potential site to the southwest of the village close to the A435, would provide excellent coverage to Gotherington.



© Crown copyright 2024 OS License AC0000862224
Contains public sector information licensed under the Open Government Licence v3.0

High-level process and next steps

1. Parish council discuss proposal internally (establish quality of mobile phone reception)
2. Visit potential sites to carry out a feasibility survey, following a positive response from a site provider
3. Agree Heads of Terms (HOTs) with the site provider/agent
4. Produce general arrangement drawings
5. Pre consultation starts and lease negotiations begin between solicitors
6. A planning application is submitted, following a positive pre consultation

Support from the Parish Council is essential to take the process forward.

Atlas welcome all feedback on the proposal.

Atlas Tower Group | Contact Details

Contact Details

Michael Rose

Atlas Tower Group Limited

New Farm Offices

Hartlake

Glastonbury

Somerset

BA6 9AB

www.atlastowergroup.co.uk

Michael.Rose@atlastowergroup.co.uk

THIS DRAFT DOCUMENT IS OF A PRELIMINARY NATURE AND IS SUBJECT TO VERIFICATION AND AMENDMENT. IT DOES NOT CONSTITUTE NOR SHOULD IT BE REGARDED AS AN OFFER OR COMMITMENT TO INVEST IN OR TO PURCHASE SECURITIES IN ANY PARTICULAR ENTITY. IT SHOULD NOT BE RELIED UPON BY ANY PERSON FOR ANY PURPOSE. THIS DOCUMENT HAS BEEN PROVIDED FOR INFORMATION PURPOSES ONLY AND NO RELIANCE SHOULD BE PLACED ON ANY INFORMATION IN THIS DOCUMENT.